

Late-Breaking Gravel

(Mt. Hood, Hwy 35 debris flows of 2006 and 1998)

By Andrew

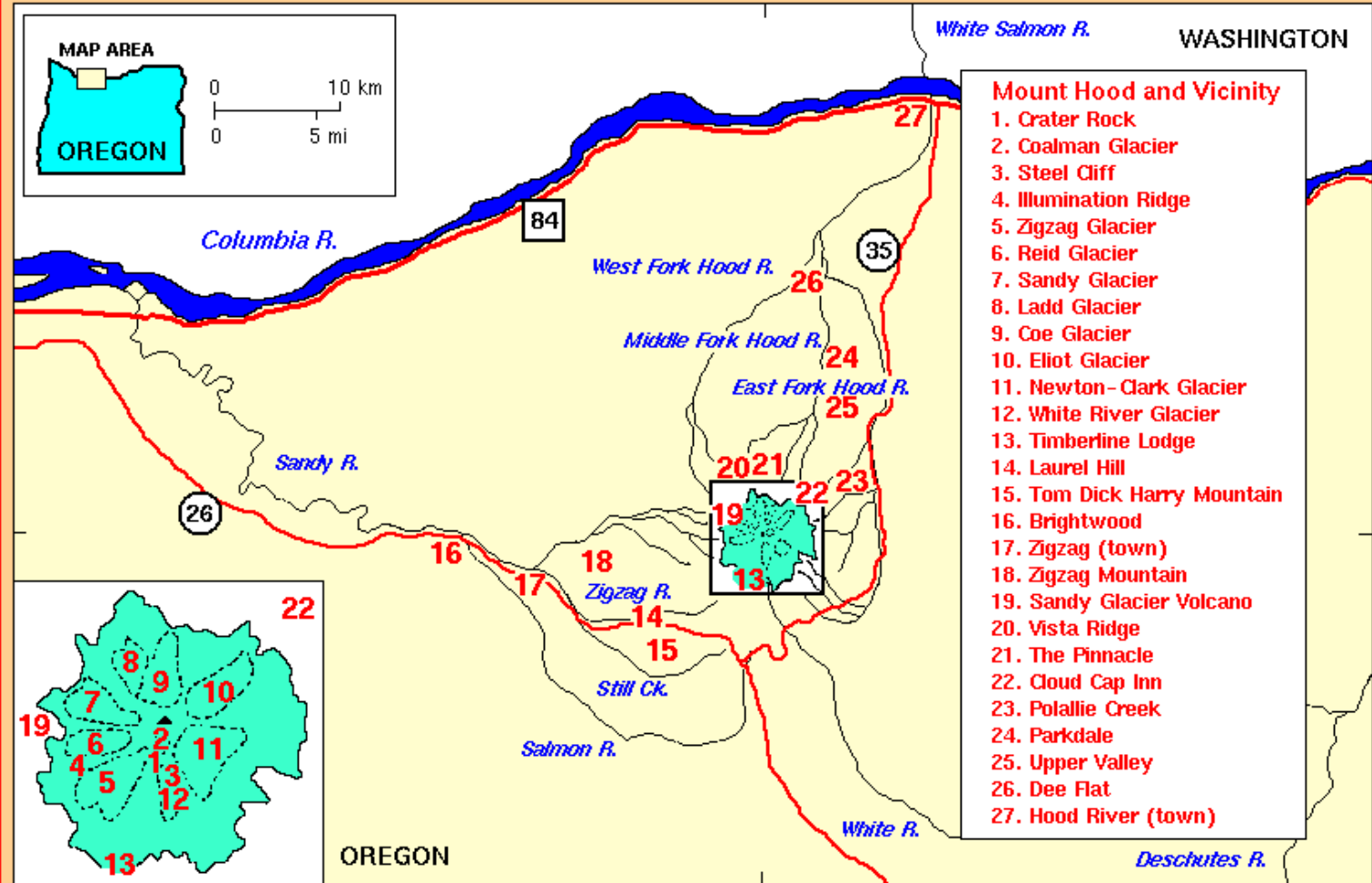
Unscrupulously compiled from:

<http://www.fhwa.dot.gov/engineering/hydraulics/pubs/mthod/mthood.cfm#09>

<http://vulcan.wr.usgs.gov/Volcanoes/Hood/RiverDrainages/framework.html>

And an email from schulzed@onid.orst.edu

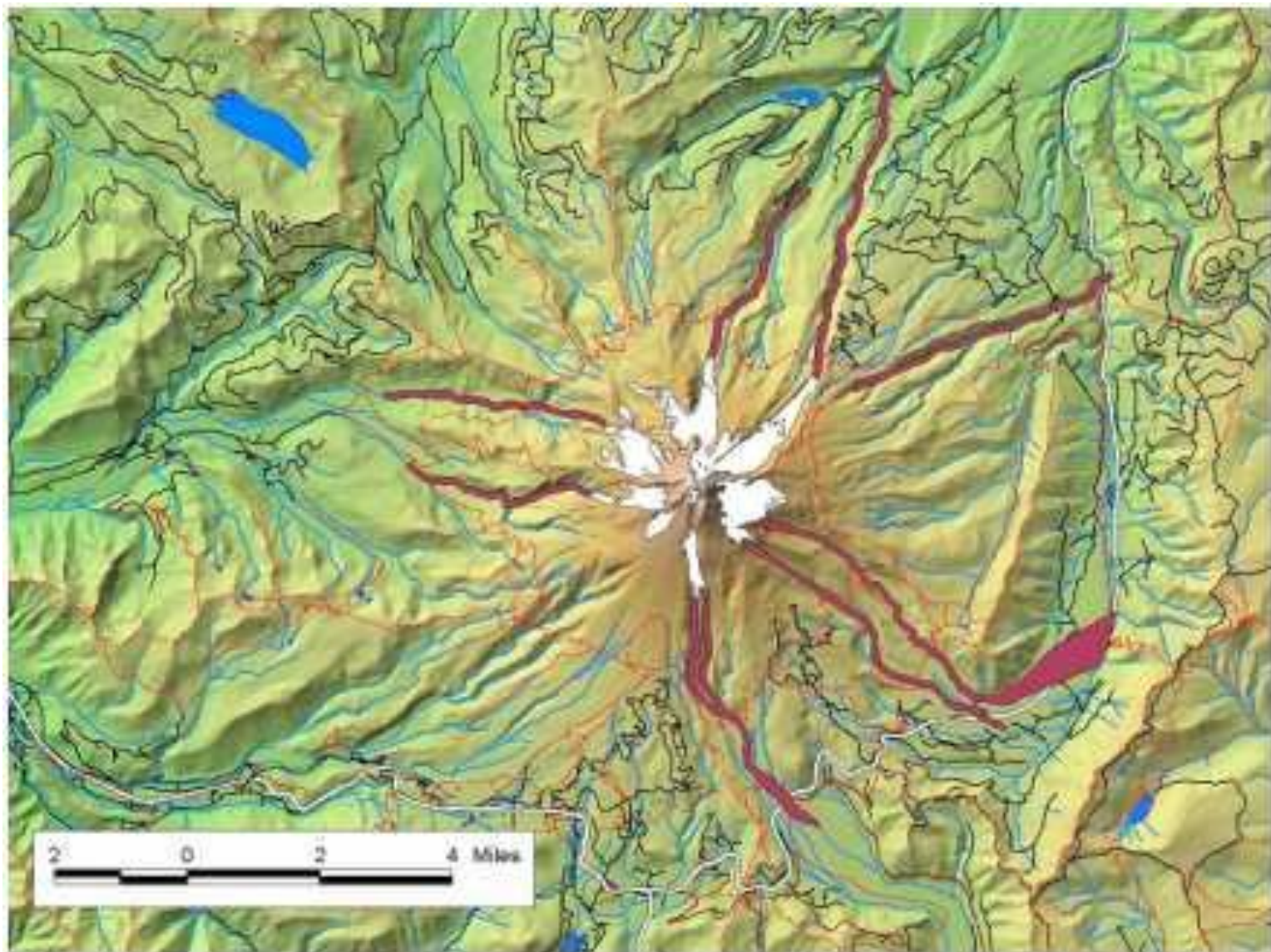
Mount Hood and Vicinity

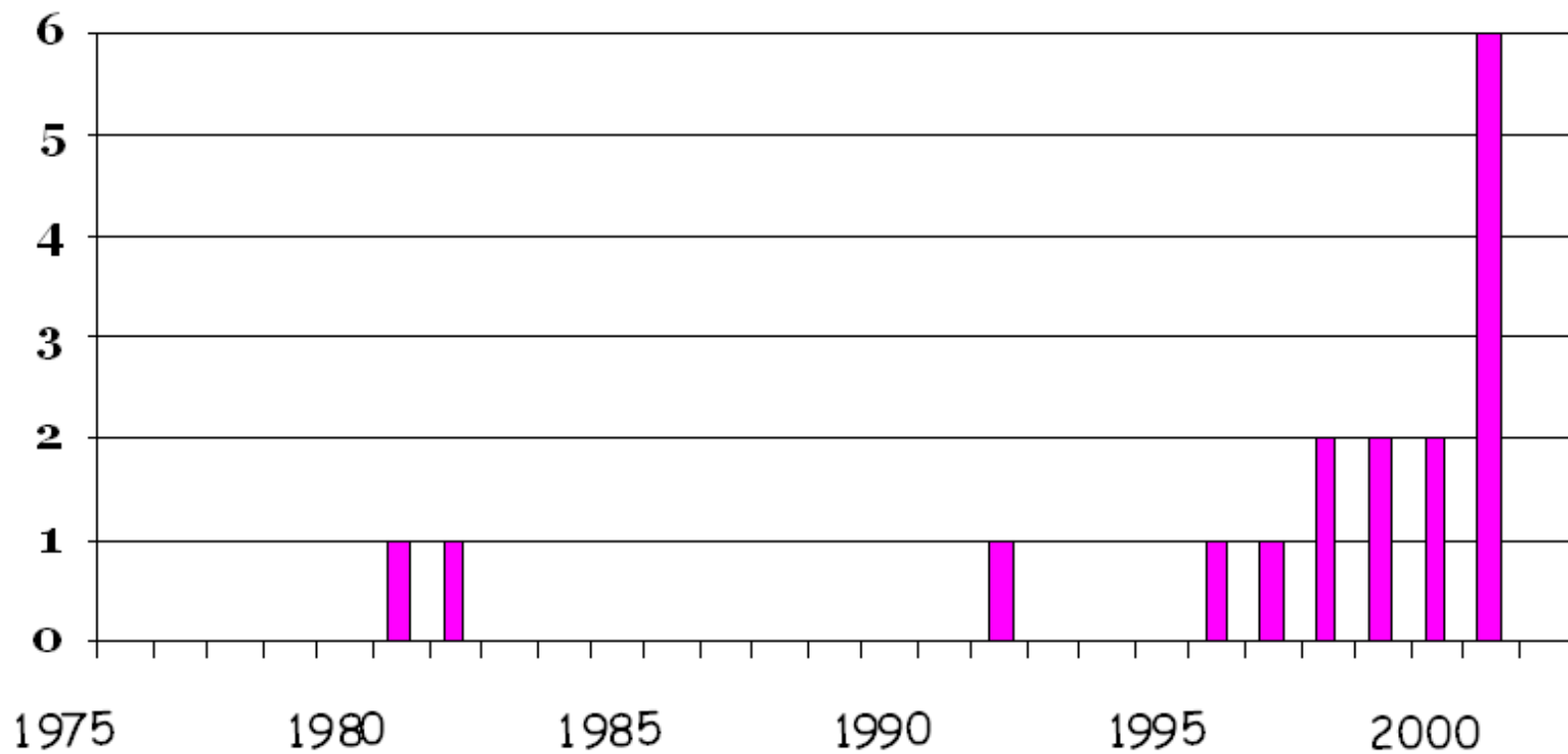


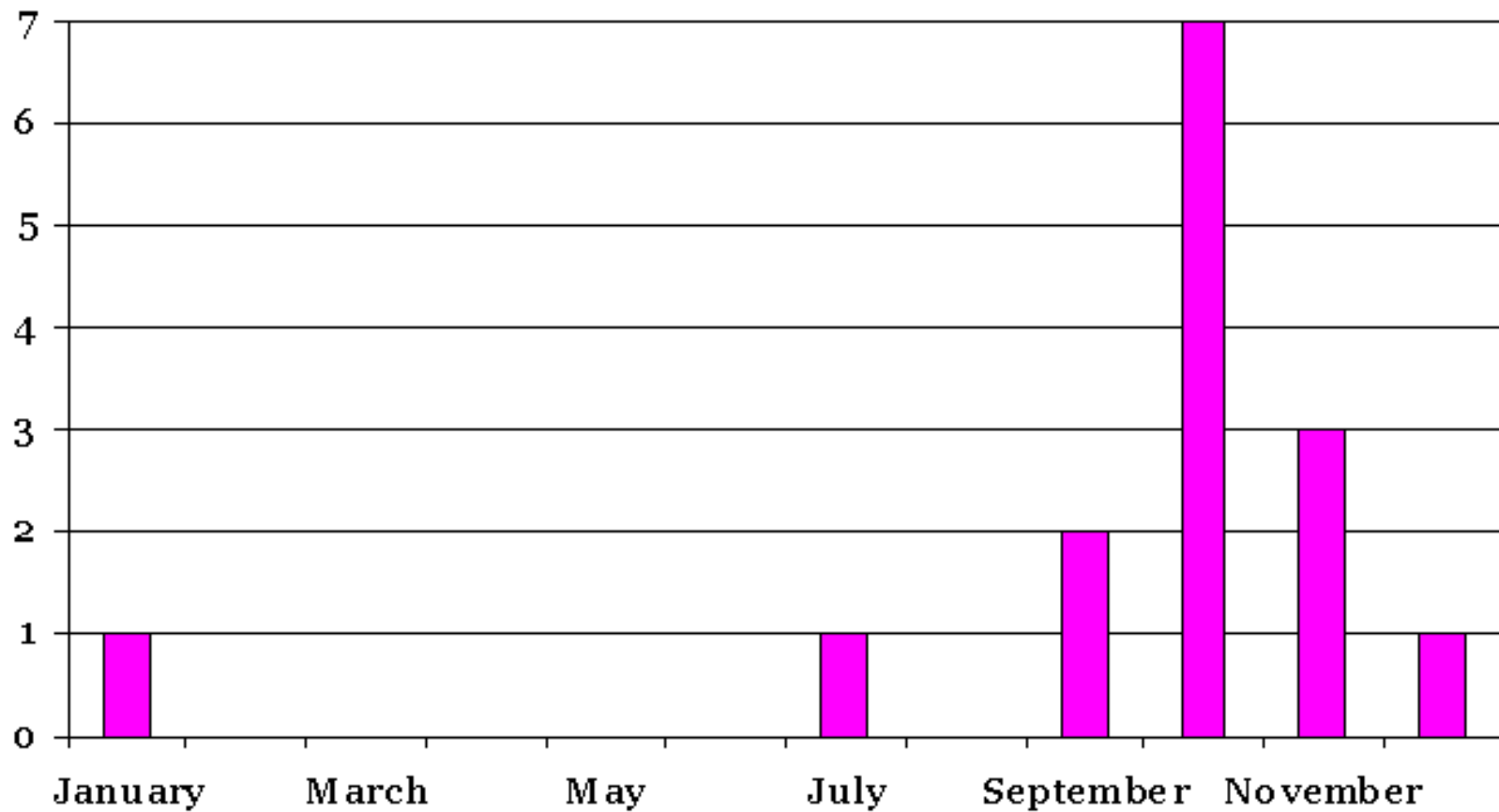
- Mount Hood and Vicinity**
1. Crater Rock
 2. Coalman Glacier
 3. Steel Cliff
 4. Illumination Ridge
 5. Zigzag Glacier
 6. Reid Glacier
 7. Sandy Glacier
 8. Ladd Glacier
 9. Coe Glacier
 10. Eliot Glacier
 11. Newton-Clark Glacier
 12. White River Glacier
 13. Timberline Lodge
 14. Laurel Hill
 15. Tom Dick Harry Mountain
 16. Brightwood
 17. Zigzag (town)
 18. Zigzag Mountain
 19. Sandy Glacier Volcano
 20. Vista Ridge
 21. The Pinnacle
 22. Cloud Cap Inn
 23. Polallie Creek
 24. Parkdale
 25. Upper Valley
 26. Dee Flat
 27. Hood River (town)



Topinka, USGS/CV0, 1997, Modified from: Swanson, et al., 1989, AGU Field Trip Guidebook T106









USGS Photo by Cynthia Gardner, September 4, 1998



USGS Photo by Cynthia Gardner, September 4, 1998





























USGS Photo by Cynthia Gardner, September 4, 1998



USGS Photo by Cynthia Gardner, September 4, 1998







